

Features

The adjoining Mount Warning, Wollumbin and Mebbin National Parks provide visitors with the opportunity to walk in World Heritage listed rainforests, enjoy spectacular views of the Wollumbin volcanic plug and camp in a peaceful forest setting.

Wollumbin - a sacred place

Wollumbin is the Aboriginal name for the Mt Warning mountain complex. It is a sacred place of great spiritual significance to the people of the Bundjalung Nation. Wollumbin is a traditional place of cultural law, initiation and spiritual education. Under Bundjalung law, only specifically chosen people are allowed to climb Wollumbin. Out of respect for their law and culture the Bundjalung ask that you consider choosing not to climb.

A changing view of the land

The name Mount Warning was chosen by Captain James Cook to warn future mariners of the offshore reefs he encountered in May 1770.

Reserved for public recreation in 1928, Wollumbin was dedicated as a national park in 1967. Inclusion on the World Heritage Register in 1986 as part of the Central Eastern Rainforest Reserves of Australia ensures its protection for future generations.

Mebbin National Park was created in 1999 and in 2003 the former Wollumbin State Forest was protected as Wollumbin National Park and State Conservation Area.

Camping, picnic & barbeque areas



Camp among the eucalypts at Cutters Camp in Mebbin National Park. It is advisable to bring your own drinking water.



Enjoy a barbeque in the peaceful surroundings of Korumbyn Creek picnic area in Mt Warning National Park or Cutters Camp in Mebbin National Park.

Vehicle entry fees

Vehicle entry and camping fees apply in Mebbin National Park. These fees are used locally to help protect the park and maintain its facilities. If you are a regular national park's visitor you can save money by purchasing an annual pass.

Caring for the park

- Leave your pets and firearms at home, as they are not permitted.
- Enjoy the wildlife but do not disturb plants, animals, bushrock, Aboriginal sites or historic places. All are protected.
- Be careful with fire and use only fireplaces provided. Bring your own firewood.
- Drive carefully and keep to public roads.
- Keep the park clean and safe for wildlife. Take your rubbish home.
- Observe all signs, as they are there for your safety and to help you enjoy your visit.
- Keep to walking tracks, as they are designed to have minimal impact.
- Be considerate of other park users - keep your noise to a minimum.
- Please do not feed the wildlife.
- Drinking water is not provided. Please bring your own.



For updates on fires, floods and park closures please contact National Parks & Wildlife Service, Murwillumbah 02 6670 8600

lismore
tourism+events

Lismore Visitor Centre

p 02 6626 0100

w visitlismore.com.au

Nimbin Visitor Centre

p 02 6689 1388

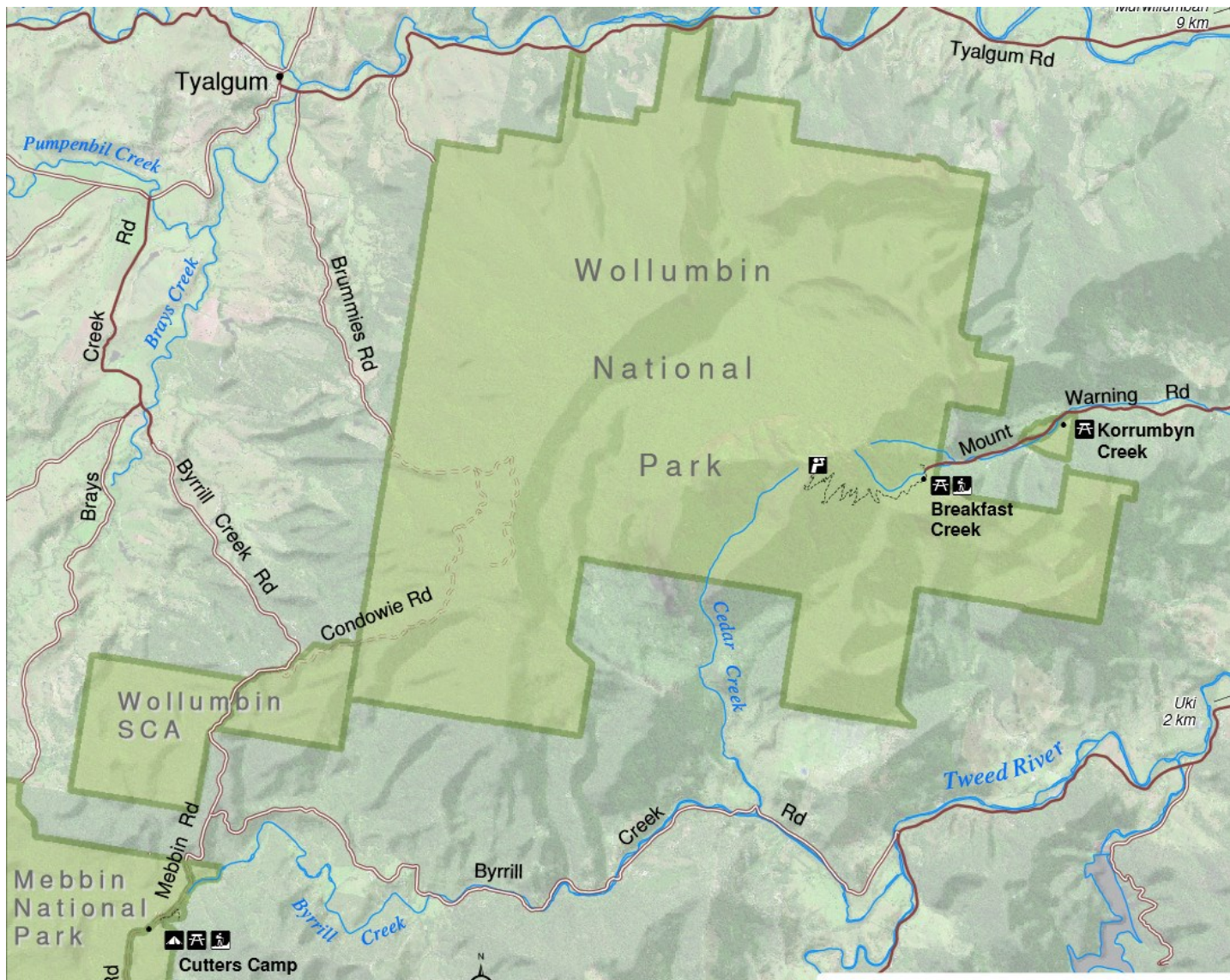
w visitnimbin.com.au



#lismoretourismevents

mt warning
wollumbin
mebbin
national parks

lismore
tourism+events



A turbulent past

Wollumbin - Mount Warning is the central plug of a huge, shield shaped volcano that twenty million years ago stretched from Mt. Tamborine in the north to Lismore in the south. Westward it extended to Kyogle and its eastern remnants occur as the reefs of Point Danger.

The height of the volcano alone was sufficient to trap moisture laden air from the coast. Over the millennium the myriad of small streams, produced by this trapped moisture, carved out this

unique and curious landform. Harder rocks such as rhyolite cliffs resisted this erosion and formed the circular rim or caldera surrounding the central plug. Mebbin National park forms part of this rim.

Plant and animal refuge

The ancient forests that occur within the national parks are a window into the past when rainforest covered much of the Australian continent. Among the multitude of flora species are Giant Stinging Trees, Figs, Booyongs, Carabeens, Brush Box, and Flame Trees. Many threatened plant species such as the Ball Nut, Spear Lily and

Arrowhead Vine are found here.

The observant walker may see a variety of birds, mammals and reptiles. Birds are abundant, over 100 species have been recorded, including the rare and endangered Rufous Scrub-bird, Wompoo Pigeon, Marbled Frogmouth, and Albert's Lyrebird.

Walking Tracks



Lyrebird Track - Mt Warning NP (200m)

The Lyrebird Track crosses Breakfast Creek before winding some 200m through palm forest to a platform set amongst the lush subtropical rainforest.



Byrill Creek Walk - Mebbin NP (450m)

Enjoy a 450m walk from Cutters Camp through subtropical forest, including a stand of ancient figs, to Byrill Creek.



Summit Track - Mt Warning NP (8.8km return, 4-5 hours)

Out of respect for Bundjalung law and culture the Bundjalung ask that you consider choosing not to climb Wollumbin. If you do climb, be aware that it is a steep 4.4km (one way) climb, with a challenging final rock scramble.

- This walk takes 4-5 hours return
- It is not advisable to start the walk after midday in winter, as darkness on return could lead to people becoming lost
- Toilets are available only at the start of the walk
- Suitable footwear should be worn
- Temperature drops rapidly as you ascend
- Carry your own refreshments
- Camping, dogs and fires are not permitted.
- Camping is available at Mt Warning Caravan Park 6679 5120